

For over 30 years **ProMinent®** have been a specialist in the design and supply of progressive cavity pumps and systems.

ProMinent Spectra progressive cavity pumps are used globally in a wide range of industries such as water & wastewater, mining, food & beverage and the chemical industry.

With both short and long geometry designs a ProMinent Spectra pump can be supplied to meet most flow, pressure and conveying media requirements.

Our experienced engineers are able to design and manufacture a specific solution to meet your individual requirements using the very latest in 3D design programs.

Every Spectra pump is fully manufactured in Germany to the highest of European standards.

### Features of ProMinent® Spectra

- Flow rates from 1 l/hour to 350 m<sup>3</sup>/hour
- Up to 24 bar discharge pressure
- Accurate metering & pumping
- Ability to pass solids & undissolved particles
- Gentle, low-shear pumping action
- Pump high viscous & high S.G. media
- Suction lifting up to 8 metres column of water (mcw)
- Reversible
- 9 different stator elastomer options
- Wide range of casing & rotor materials
- Close-coupled & long-coupled construction
- Hopper feed, vertical mount & food grade options available
- Robust cardan joints as standard
- Flanges drilled to suit preferred standard
- Custom options such as rubber lined pump casings are available
- Fully manufactured in Germany

### Primary Applications

- Water & Wastewater Treatment
- Mining
- Chemical Industry
- Food & Beverage
- Pulp & Paper
- Agriculture
- Dispensing & Metering



## Joint Types

### Cardan joint

Is the standard heavy duty, wear-resistant joint for Spectra progressive cavity pumps. The design of this joint ensures an extended lifetime compared to a conventional pin joint. It is encapsulated and filled with lubricant.



### Bolt joint (open)

Is designed especially for hygienic applications, this joint has a minimal number of components to prevent the build up of product residue.



### Bolt joint (sealed)

Is specifically for the S06, S08 and S10 pump models. This joint is sealed with O-rings and filled with lubricant.



## Accessories

### Overpressure protection

Switches off the pump when the set pressure is exceeded. It is suitable for all media and applications, including hygienic.



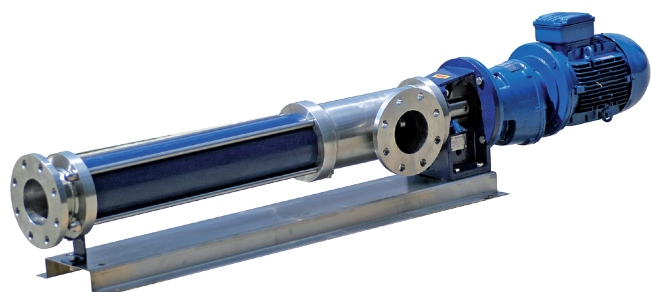
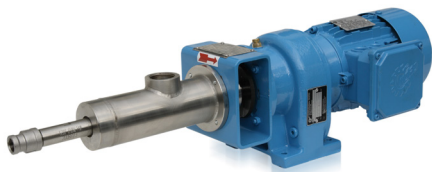
### Dry run protection (conductive)

Will recognise a reduction in the suction line fluid level and immediately switch the pump off to prevent running the pump dry.



### Dry run protection (thermal)

Will recognise an increase in stator temperature and immediately shut the pump down to prevent stator wear.



### SYDNEY OFFICE

Unit 4, 4 Narabang Way,  
BELROSE NSW 2085  
P 02 9450 0995  
F 02 9450 0996  
sales@prominentfluid.com.au

### QUEENSLAND OFFICE

Unit 1, 68 Murdoch Circuit,  
ACACIA RIDGE QLD 4110  
P 07 3213 1900  
F 02 9450 0996  
pfcqld@prominentfluid.com.au

### VICTORIA OFFICE

Unit 1/21-22 National Drive  
HALLAM VIC 3803  
P 03 8795 7430  
F 02 9450 0996  
pfcvic@prominentfluid.com.au

### WESTERN AUSTRALIA OFFICE

Office 11, 34 Welshpool Road  
WELSHPOOL WA 6106  
pfcwa@prominentfluid.com.au